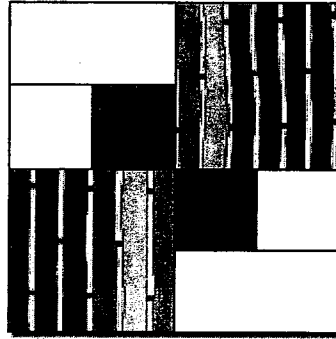


Tam's Patch

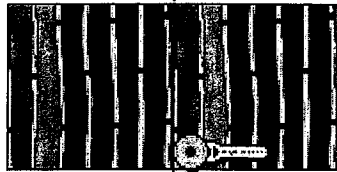
This makes an 8" block!
It's a Jeffrey Gutcheon
design. :o)



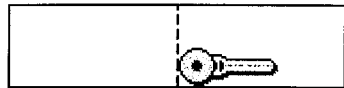
Please abide by the
Terms and Conditions of
use! :o)

5 blocks x 7 blocks would
be a nice Project Linus
Quilt!

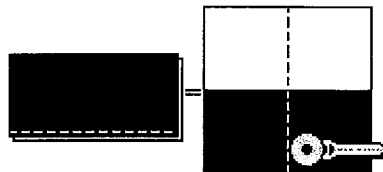
** Preparing the Pieces and Sewing the Block **



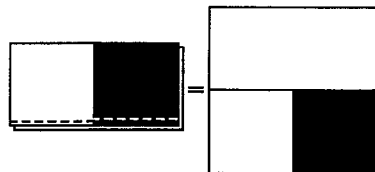
First cut the Color 1 4-1/2" x 9" strip into two 4-1/2" squares...



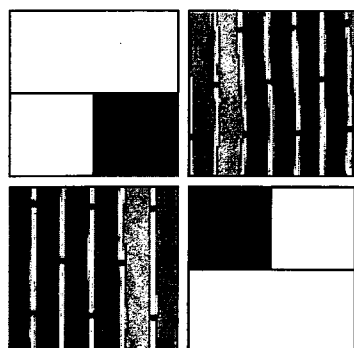
Next cut the Color 3 2-1/2" x 9" strip into two 2-1/2" x 4-1/2" rectangles...



Now sew the Color 2 and Color 3 2-1/2" x 5" strips right sides together along one long edge, using a 1/4" seam allowance. Press seam to the darker side. Cut this at the 2-1/2" point to make two pieced units...

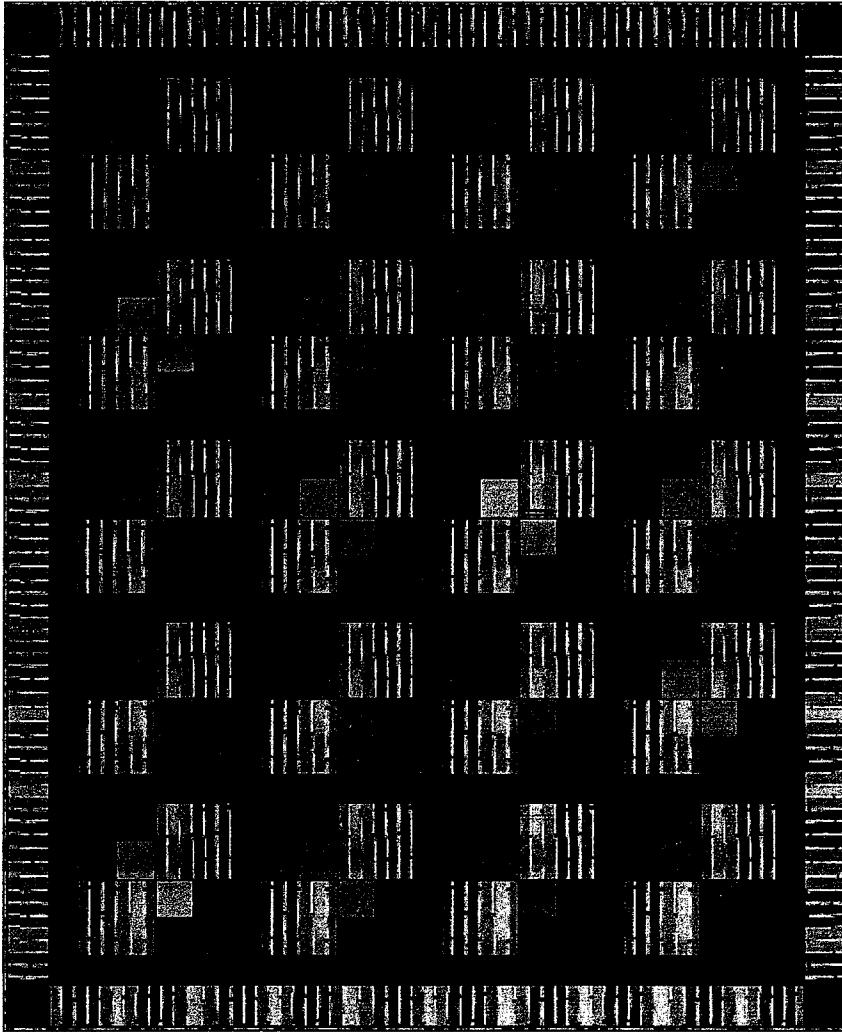


Sew a Color 3 rectangle to the top of each pieced unit as shown at left...



Now lay out all units as shown at left. Sew two horizontal rows, and then join the rows to complete the block...Good Job!

...on to Page 2!



Here are four blocks by five with sashing rows between the blocks!...or click here to see a version in white instead of black!

Happy Quilting Folks!

Marcia :o)

Here's Dessa's!
Cynthia's Fussy Cut!

**** Supplies List ****

any bright



1 Color 1 needs: one 4-1/2" x 9" strip

black



2 Color 2 needs: one 2-1/2" x 5" strip

white



3 Color 3 needs: one 2-1/2" x 9" strip AND one 2-1/2" x 5" strip

To the Patterns or The Quilter's Cache

© June 9 2006 Marcia Hohn



Page 1

Traditional Block

<http://www.quilterscache.com>

questions?

call Sue Oakes 408 818-0889

sueoakes@sbcglobal.net