



# Scrappy Valentine Heart

Piece by Piece Quilters Block of the Month

January 2016

8" x 8" Finished - 8 ½" x 8 ½" Unfinished

Using any combination of reds/pinks (Valentine colors) cut the following:

2 - 2 ½" x 4 ½" Rectangles - Top Row

2 - 1 ½" x 8 ½" Rectangles - Second and Third Rows - use a variety of fabrics

1 - 4 ½" x 8 ½" Rectangle - Fourth Row (bottom)

White on White (WOW)

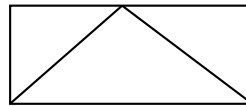
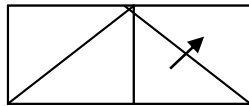
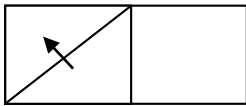
4 - 2 ½" Squares

2 - 4 ½" Squares

Draw a diagonal line on each of the square WOW pieces.

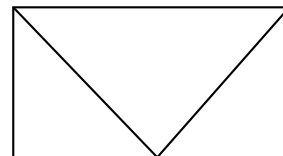
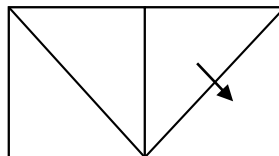
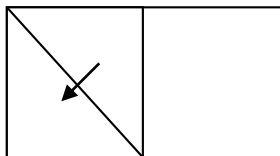


Place one 2 ½" white on white (WOW) on the left half of each of the 2 ½" x 4 ½" red rectangles. Sew a fraction to the outside of the diagonal line. Press to the corner and trim the back red and WOW pieces to ¼" inch. Then place the other 2 ½" squares on the right-hand side of the rectangle and repeat the above process. Sew these two pieces together side by side to create the first row - the heart humps.



Sew on each of the 1 ½" x 8 ½" pieces to the bottom of the heart humps.

Place one 4 ½" WOW piece on the left side of the 4 ½" x 8 ½" red rectangle and sew a fraction to the outside of the drawn line. Press down toward the WOW creating a triangle in the corner. Trim the seam to ¼". Repeat this step on the right side of the large rectangle. This will create the bottom point of the heart.



You can decorate the heart using trims, lace and anything else you would like.

Call Diane LeGore at 408-779-5013 or email at [dalegore@charter.net](mailto:dalegore@charter.net) if you have any questions. Have fun with this block.